
FIREBRAND 28



MetalCraft Marine

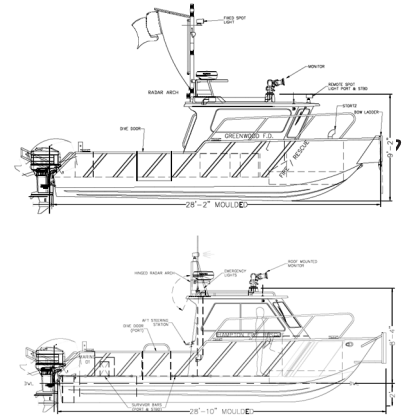
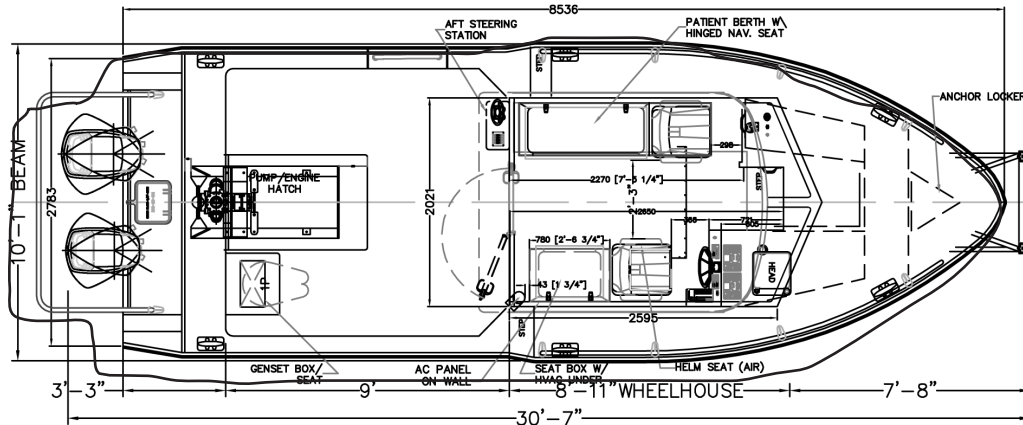
INCORPORATED

Builders of High Speed, Fire/Rescue, Patrol and Workboats

Metal Craft Marine believes that with the right input from our customers, we can build the 'perfect boat' ... and we stand behind it with our 10 year hull seam warranty.

www.metalcraftmarine.com

FIREBRAND 28



© Copyright Metalcraft Marine 2004

The Firebrand 28' is a new generation of fire boat. It provides more speed, manoeuvrability, cargo capacity & pumping capacity than any other boat of its size. This is the highest pumping 28' NFFA fireboat in North America.

Fitted with a Darley pump that produced flow meter results of 1500 GPM. The unique MetalCraft Marine designed sea chest has an intake that is three times the cross sectional area of the pump intake, and can be cleaned while underway. The Main Monitor is mounted over the center of the boat, minimizing the reaction force and allowing the operator to control the boat while flowing a full stream. Operators are amazed at the boat's handling characteristics while flowing water from the main monitor. Simplicity is the key to the fire system controls. It is based on a fire truck design and uses conventional fire truck parts for ease of maintenance and service. At cruising speed of 28knts the FB-28' produces very little wake for a boat of its size. The FB-28' packs a huge punch for its size and can get into the smallest of marinas.

Firebrand - 28' Delivering water and emergency response; in time, on target, every time, in any condition.

Speed:	34.6 kts. 40 mph	Electrical System	Other Features
L.O.A.	33' 5"	• Shorepower 1x 30 amp	• Chart Table
B.O.A.	10' 6"	• D/C (12V) Breakers - 16	• Crew seating
Draft	18"	• A/C (110V) Breakers - 3	• Non skid 18' side decks
Pump	1250 GPM Darley, total flow was 1500 gpm	• D/C Outlets - 2	• Safety railings with harness brackets
Pump Engine	4.3L Mercruiser	• A/C Outlets - 2	• Anchor Locker
Monitors	Elkhart 8394 remote	• Corrosion Meter	• Hinged Dive Door
Engine	Bombardier 225 E-TEC Outboard 200-250 HP	• Cabin, Scene & Spot lights	• 4 watertight compartments
Fire Fighting Systems		• NAV lights	• Rubber sound matting
• Single Darley fire pump producing 1500 gallons/min.		• Battery Charger	• Finished interior
• Roof mounted, remote operated 1250 GPM monitor Elkhart 8394		Electronics	• Flat or treadplate aluminum decking
• 2-1/2" valved NST capped discharges		• VHF	• Tinted side windows, clear windshields
• All fire controls and gauges at dedicated console		• GPS, radar, chartplotter w/depth	• 2 multi-speed wipers
EMS Support		• Compass	• 40,000 BTU cabin heater w/defrost
• Heated patient care area with primary patient care berth		• Loudhailer/Fog horn	• Hinged mast w/radar arch
• Dedicated EMS equipment storage with A/C outlet for chargers		• Siren	• Push knees
• SCBA storage panel		• Emergency lights	• Access to all piping and valves
		• Many available options	• Deck hose storage lockers
		Standards	
		• Meets NFPA 1925 pumping for Type 'V'	
		• Meets OSHA Db rating	
		• USCG CFR 46	
		• USCG interior flame retardant rating	
		• American Boating & Yachting Council	
		• American Bureau of Shipping Welding Standards	

www.metalcraftmarine.com

Phone (613) 542-1810

Toll Free 800 410-8464

Fax (613) 542-6515

ASK YOUR METALCRAFT REPRESENTATIVES ABOUT OUR FULL OPTIONS LIST