
FIRESTORM 30 WITH OUTBOARDS



MetalCraft Marine

INCORPORATED

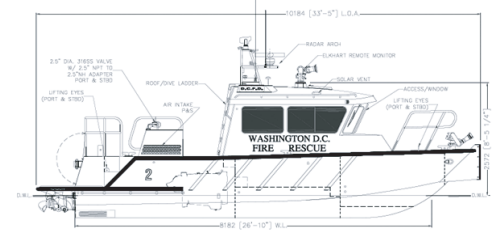
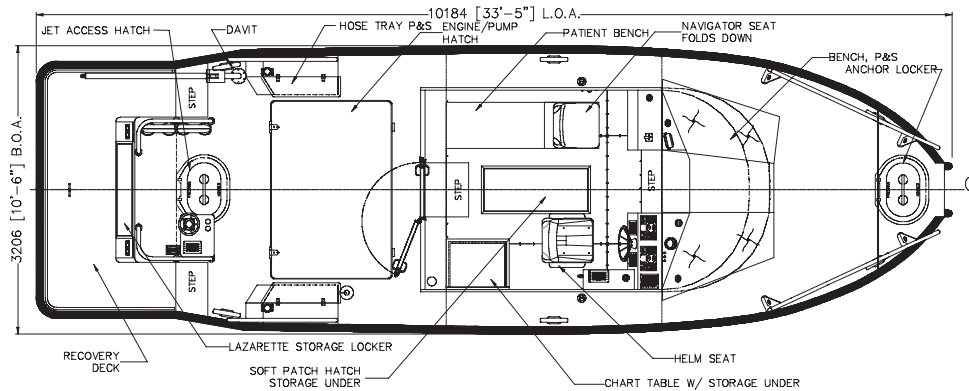
Builders of High Speed, Fire/Rescue, Patrol and Workboats

Metal Craft Marine believes that with the right input from our customers, we can build the 'perfect boat' ... and we stand behind it with our 10 year hull seam warranty.

www.metalcraftmarine.com

FIRESTORM 30 WITH OUTBOARDS

NOTE: SOME OPTIONS SHOWN



© Copyright Metalcraft Marine 2004

The Firestorm-30 is a New Generation of fireboat. It provides more speed, manoeuvrability & pumping capacity than any other boat in its class. It is the highest pumping 30' fireboat in North America. It is fitted with a Darley pump that produced flow test results of 1800 GPM. High pump numbers are due to a unique MetalCraft Marine proprietary designed sea chest. This sea chest has an intake three times the cross sectional area of the main, can be inspected and cleaned while underway. The monitor location is close to the centre of buoyancy of the boat. This permits the helmsman to pivot the boat around the thrust load at low RPM, similar to the load of a towboat. Operators are amazed at the boat's control under full streaming at any angle. The boat's head never blows off its course. Simplicity is the key to the fire system, and is based on fire truck system design for ease of maintenance and reparability. The FS-30 packs a huge punch for its small size and can get into the smallest of marinas.

Speed:	37 kts	Electrical System	Other Features
L.O.A.	33' 5"	• Shorepower 1x30 amp	• Chart Table
B.O.A.	10' 8"	• D/C (12V) Breakers - 16	• Suspension helm seat
Draft	18"	• A/C (110V) Breakers - 3	• Non skid 24" side decks
Pump	1250 GPM Darley, total flow was 1800 gpm	• D/C Outlets - 2	• Safety railings
Monitors	Elkhart 8294 remote	• A/C Outlets - 1-Corrosion Meter	• Anchor Locker with collision bulkhead
Engine	Twin Bombardier 225 ETECH outboards	• Cabin, Scene & Spot lights	• Hinged dive door
Pump Engine	Mercruiser 5.0L with block heater	• NAV & RIM lights	• 3 watertight compartments
Fire Fighting Systems		• Battery Charger	• Rubber sound matting
• Single Darley 1250 fire pump		Electronics	• 3" 'D' rubber fendering
• Roof mounted, remote operated 2000 GPM monitor Elkhart 8294		• VHF, Radar integrated w/GPS	• Fully finished pilot house interior
• LDH 5" Storz connection for supply to land units		• GPS, chartplotter w/depth	• High security engine hatch locks
• 2x 2-1/2" capped discharges		• Compass	• High security battery switches & start sequence
• All fire controls and gauges at dedicated console		• Loudhailer/Fog horn	• 5 gallon & 50 gallon foam canister storage
EMS Support		• Siren	• Tinted side windows, clear windshields
• Heated patient care area with primary patient care berth and 1 secondary patient area		• Emergency lights	• Raked forward windshields to reduce glare and improve water clearing
• Dedicated EMS equipment storage with NC outlets for battery chargers		• Many available options - FLIR etc.	• 2 speed wipers w/washers
• SCBA storage panel		Standards	• 40,000 BTU cabin heater w/defrost
		• Meets NFPA 1925 pumping for Class 'C' (500 GPM)	• Hinged mast w/radar arch
		• Meets OSHA Db rating	• Watertight, integral to roof, electrical plug
		• USCG CFR 46	• Floatable dive/roof ladder
		• USCG interior flame retardant rating	• Push knees with collision zone
		• American Boating & Yachting Council	• Ice clearing roof design
		• American Bureau of Shipping Welding Standards	• Access to all piping and valves

www.metalcraftmarine.com

Phone (613) 542-1810

Toll Free 800 410-8464

Fax (613) 542-6515

ASK YOUR METALCRAFT REPRESENTATIVES ABOUT OUR FULL OPTIONS LIST