
FIRESTORM 30



MetalCraft Marine

INCORPORATED

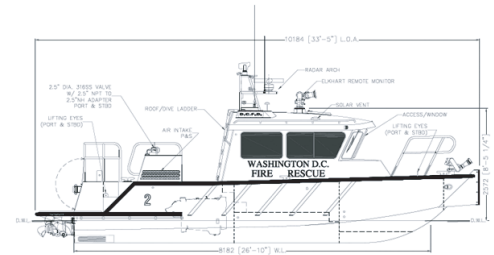
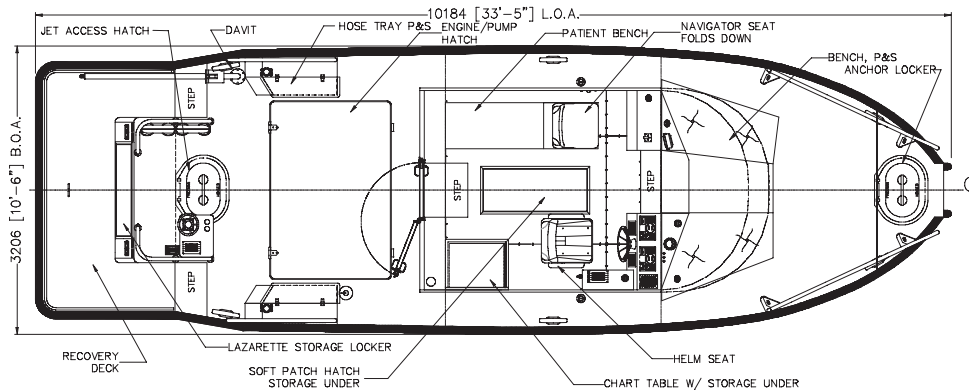
Builders of High Speed, Fire/Rescue, Patrol and Workboats

Metal Craft Marine believes that with the right input from our customers, we can build the 'perfect boat' ... and we stand behind it with our 10 year hull seam warranty.

www.metalcraftmarine.com

FIRESTORM 30

NOTE: SOME OPTIONS SHOWN



© Copyright Metalcraft Marine 2004

The Firestorm-30 is a New Generation of fireboat. It provides more speed, manoeuvrability & pumping capacity than any other boat in its class. It is the highest pumping 30' fireboat in North America. It is fitted with a Darley pump that produced flow test results of 2400 GPM with a single 1750 GPM pump. High pump numbers are due to a unique MetalCraft Marine proprietary designed sea chest. This sea chest has an intake three times the cross sectional area of the main, can be inspected and cleaned while underway. The monitor location is close to the centre of buoyancy of the boat. This permits the helmsman to pivot the boat around the thrust load at low RPM, similar to the load of a towboat. Operators are amazed at the boat's control under full streaming at any angle. The boat's head never blows off its course. Simplicity is the key to the fire system, and is based on fire truck system design for ease of maintenance and reparability. The FS-30 packs a huge punch for its small size and can get into the smallest of marinas.

Speed: 34.6 kts. 40 mph
 Speed: 34 kts
 L.O.A. 33' 5"
 B.O.A. 10' 6"
 Draft 18"
 Pump 1750 GPM Darley,
 total flow was 2400 gpm
 Monitors Elkhart 8294 remote
 Engine Twin Cummins diesels
 320 HP each
 Jets Hamilton 241

Fire Fighting Systems

- Single Darley 1750 fire pump
- Roof mounted, remote operated 2000 GPM monitor Elkhart 8294
- LDH 5" Storz connection for supply to land units
- 2x 2-1/2" capped discharges
- All fire controls and gauges at dedicated console

EMS Support

- Heated patient care area with primary patient care berth and 1 secondary patient area
- Dedicated EMS equipment storage with NC outlets for battery chargers
- SCBA storage panel

Electrical System

- Shorepower 2x 30 amp
- D/C (12V) Breakers - 16
- A/C (110V) Breakers - 12
- D/C Outlets - 3
- A/C Outlets - 3
- Corrosion Meter
- Cabin, Scene & Spot lights
- NAV & RIM lights
- Battery Charger

Electronics

- VHF, Radar integrated w/GPS
- GPS, chartplotter w/depth
- Compass
- Loudhailer/Fog horn
- Siren
- Emergency lights
- Many available options - FLIR etc.

Standards

- Meets NFPA 1925 pumping for Class 'C' (500 GPM)
- Meets OSHA Db rating
- USCG CFR 46
- USCG interior flame retardant rating
- American Boating & Yachting Council
- American Bureau of Shipping Welding standards

Other Features

- Chart Table
- Suspension helm seat
- Non skid 24" side decks
- Safety railings
- Anchor Locker with collision bulkhead
- 3 watertight compartments
- Rubber sound matting
- 3" 'D' rubber fendering
- Fully finished pilot house interior
- High security engine hatch locks
- High security battery switches & start sequence
- 5 gallon & 50 gallon foam canister storage
- Tinted side windows, clear windshields
- Raked forward windshields to reduce glare and improve water clearing
- 2 speed wipers w/washers
- 40,000 BTU cabin heater w/defrost
- Hinged mast w/radar arch
- Watertight, integral to roof, electrical plug
- Floatable dive/roof ladder
- Push knees with collision zone
- Ice clearing roof design
- Access to all piping and valves

www.metalcraftmarine.com

Phone (613) 542-1810

Toll Free 800 410-8464

Fax (613) 542-6515

ASK YOUR METALCRAFT REPRESENTATIVES ABOUT OUR FULL OPTIONS LIST