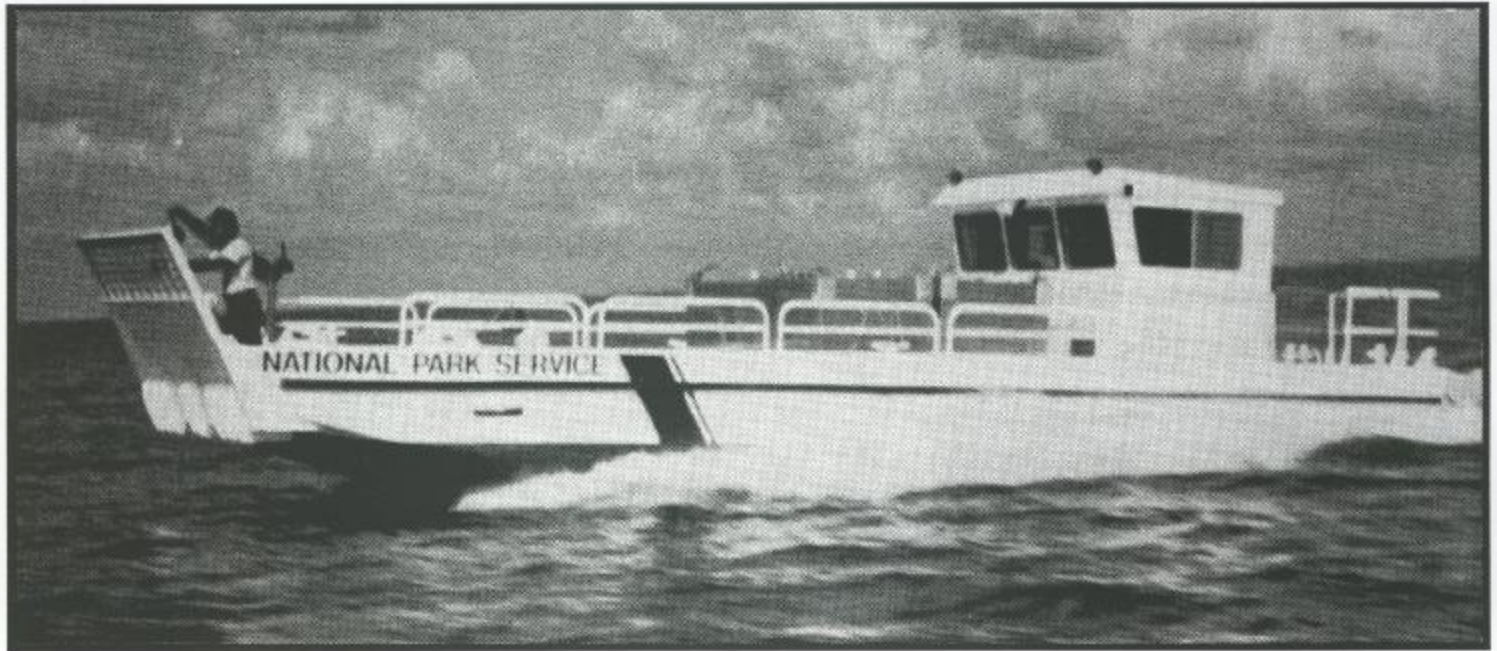

St. Lawrence Utility Landing Craft



Heavy-Duty at High Speed

The St. Lawrence high speed ULC has been in production since 1991. The boat has repeatedly demonstrated above average performance exceeding design specifications by as much as 25% in load carrying capability and high speed performance. The boat's unusual hull shape offers much greater directional stability and lift than a standard flat or V-bottom Sea Truck design. The bottom has worked very well with twin and triple jet applications with virtually no cavitation problems in difficult manoeuvring conditions. Versions are operating in the Niagara Gorge Rapids with 900 to 1,500 HP and speeds up to 60 mph. The model shown above achieved 30+ knots light and 19 knots with 20,000 lb. payload with only 470 HP. At top speed the boat could complete 180 degree turns in 1-1/2 boat lengths.

MetalCraft Marine's Commercial Boat Division

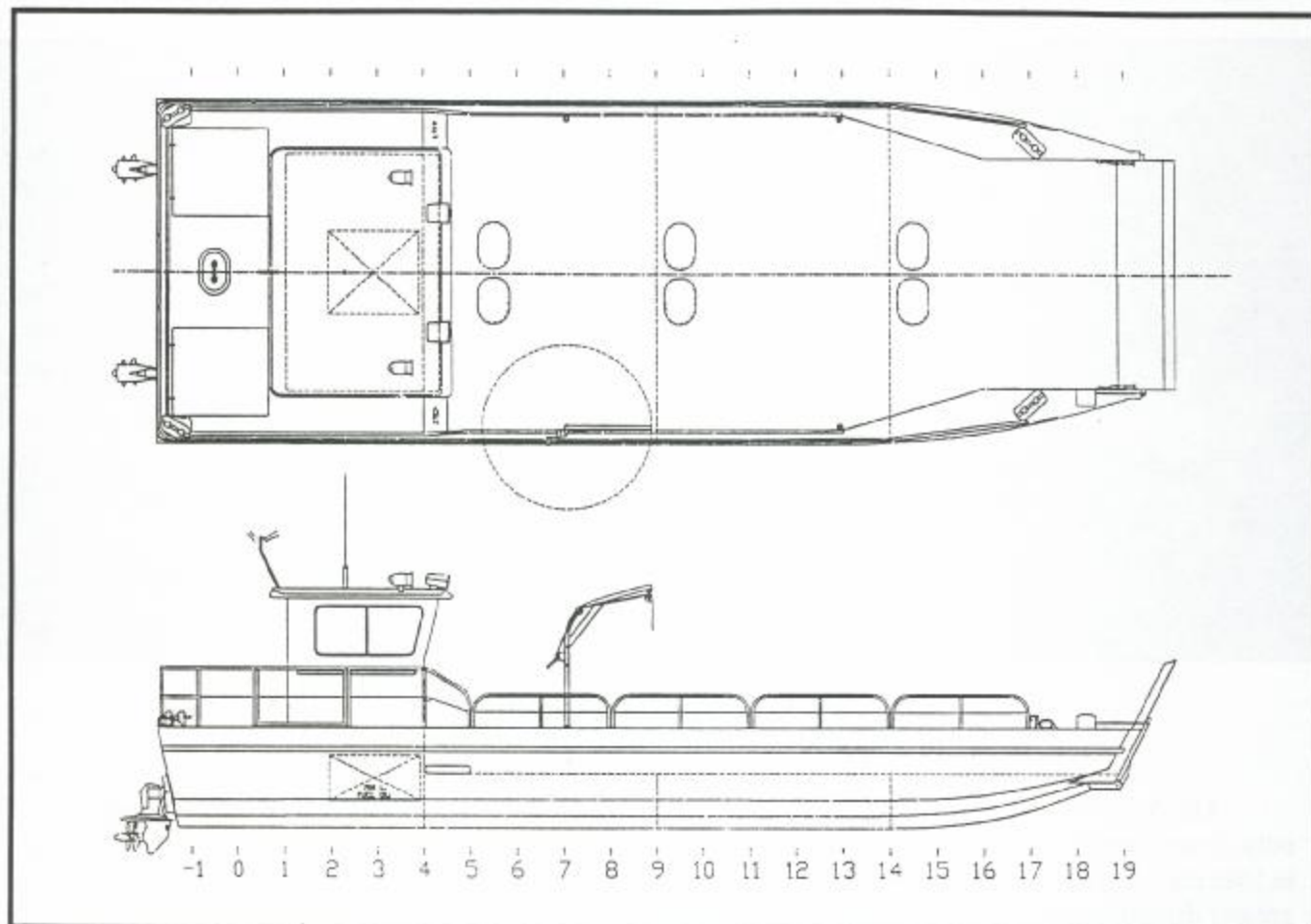
With Our 10 Year Hull Warranty, We Believe There's No Better Boat!

MetalCraft Marine

Builders of Fine Quality Aluminum Sport and Work Boats

- Custom Boat Design
- Refits and Dry-dock Service
- Manufacturing of Custom and Stock Lines
- Custom Aluminum Welding & Fitting

MetalCraft Marine is located on Kingston's inner harbour, manufacturing boats and providing services to the boating industry. Master Boat Builder, Thomas Wroe brings 20 years experience in design and construction to the business, ensuring the translation of your concept into an efficient, workable design.



St. Lawrence Utility Landing Craft

Specifications

LOA	30' - 60'
Beam	10' - 20'
Power Options	Outdrive, Inboard, Waterjet, Outboard
Payload Capacity	9,000 - 35,000 lb

Standard Features

- 5/16" marine grade aluminum bottom plate
- 1/4" marine grade aluminum hull sides
- 1/4" treadplate decking
- 10 year warranty on hull seam welds
- Full-width bow door with electric winch
- Modified shallow V hull with planing flats
- Hydraulic Steering

Optional Features

- Propulsion System (outdrives, jets, props) up to 900 hp
- Crew cabin to owner specification
- Paint System
- Cabin heaters
- A-Frame hoist or davit (manual or power)

Property of MetalCraft Incorporated. Any reproduction in whole or in part requires the written consent of MetalCraft Marine Inc.

MetalCraft Marine

INCORPORATED

347 Wellington Street, Kingston, Ontario, Canada K7K 6N7 (613) 542-1810 Fax (613) 542-6515